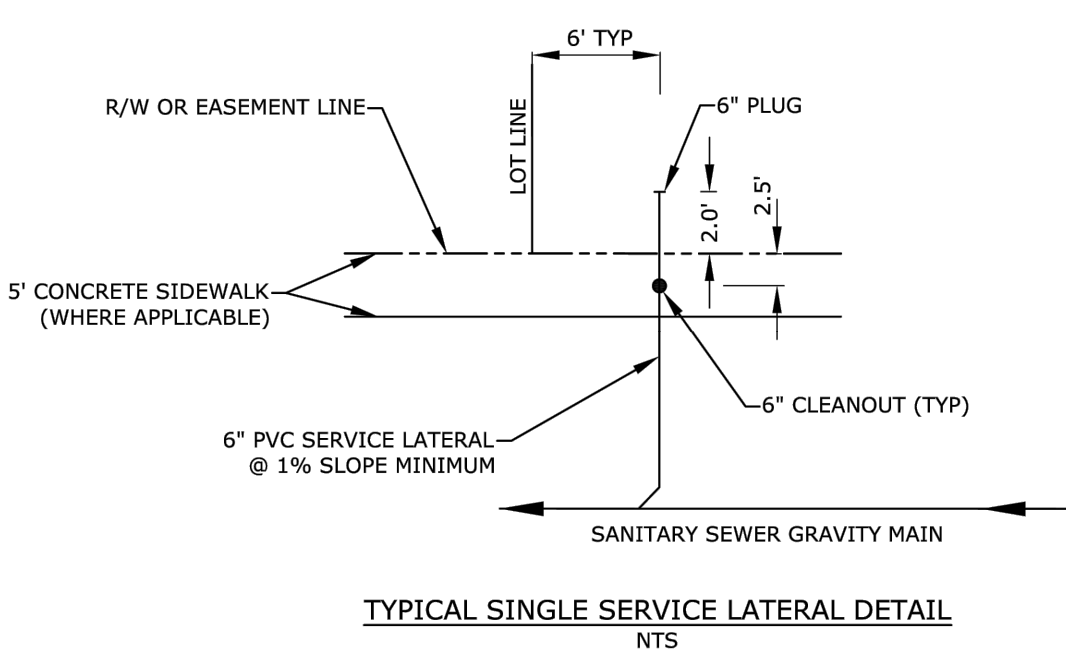
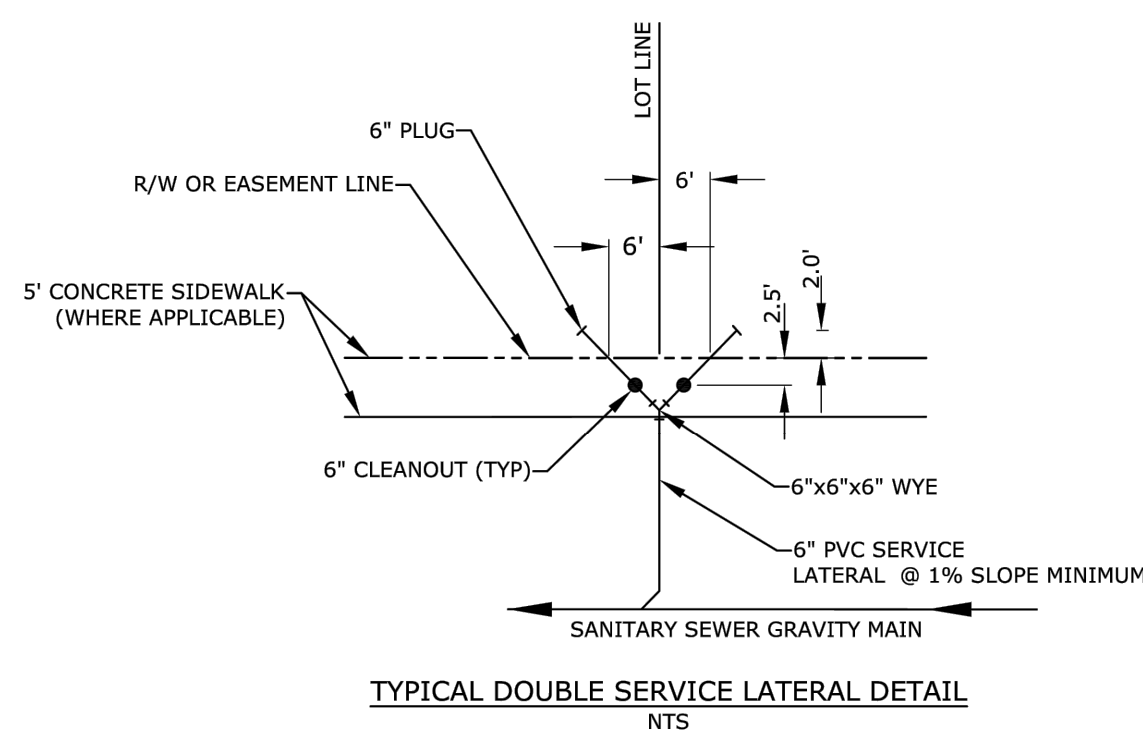


PLOTTED: 10/2024

STANDARD DETAIL



REVISÉD

7/7/2021

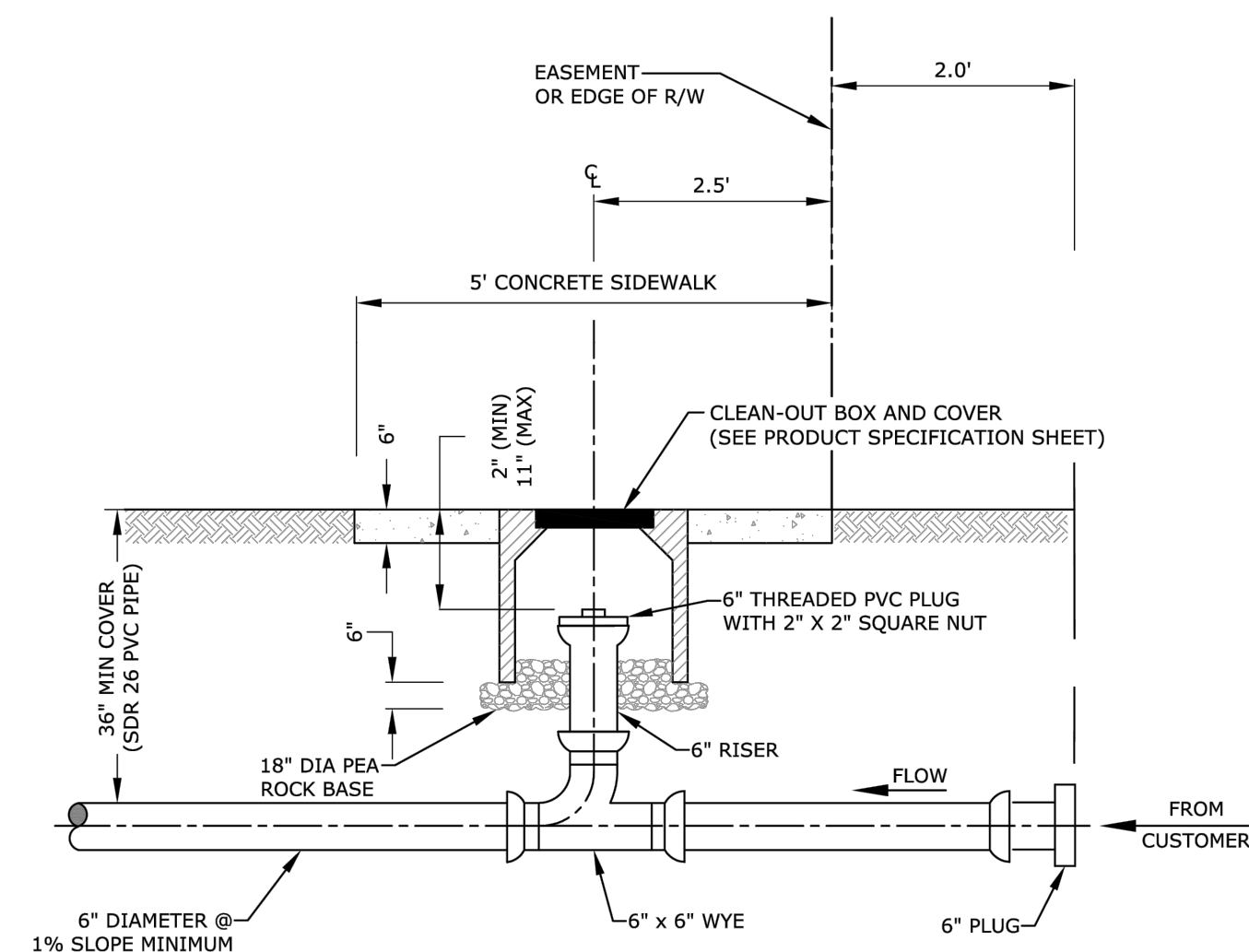
SEWER SERVICE
CONNECTION AT PROPERTY
LINE OR EASEMENT LINE
PLAN

FIGURE

342

BROWARD COUNTY
PUBLIC WORKS DEPARTMENT
PLOTTED: 10/2024

STANDARD DETAIL



1. THE CLEAN OUT SHALL BE INSTALLED IN THE MIDDLE OF THE SIDEWALK. THIS DIMENSION WILL VARY DEPENDING UPON THE WIDTH OF THE SIDEWALK. 2.5' APPLIES TO 5' SIDEWALK WIDTH. IF SIDEWALKS DO NOT EXIST, THE CLEAN OUT SHALL BE INSTALLED 2.5' FROM THE RIGHT OF WAY LINE.
2. A NEW SECTION OF SIDEWALK SHALL BE POURED AROUND THE CLEAN-OUT BOX WHEN WORKING IN AN AREA WITH EXISTING SIDEWALKS.
3. IN GRASS AREA USE 24"x24" OR 24" DIAMETER CONCRETE COLLAR.

REVISÉD

7/7/2021

SEWER SERVICE CONNECTION AT PROPERTY LINE OR EASEMENT LINE PROFILE

FIGURE

341

REV PER CITY COMMENTS	12/16/25	DJP
REV PER CITY COMMENTS	10/21/25	DJP
REV PER CITY COMMENTS	08/25/25	DJP
REVISIONS	DATE	BY
FILE NAME 1118ENC.dwg		

CAULFIELD & WHEELER, INC.
CIVIL ENGINEERING
LANDSCAPE ARCHITECTURE - SURVEYING
7900 GLADES ROAD - SUITE 100
BOCA RATON, FLORIDA 33434
PHONE (561)-392-1991 / FAX (561)-750-1040

THE SATORI
42111 N FEDERAL HIGHWAY
WATER DISTRIBUTION &
SANITARY SEWER DETAILS
POMPANO BEACH, FL, 33064

DATE	05/28/25
DRAWN BY	DJP
F.B./ PG.	----
SCALE	N/A

MATTHEW V. KAHN PROFESSIONAL ENGINEER LICENSE NO. 82227 STATE OF FLORIDA - FOR THE FIRM - DATE

JOB # 11146
SHT.NO. WS-5
OF 16 SHEETS